



IWUF 10th
Sanda World Cup

REGULATIONS

🕒 April 5-10, 2025

📍 Jiangyin, China



WUSHU

Issued on December 23, 2024 by IWUF

CONTENTS

I. GENERAL INFORMATION

1. INTRODUCTION	1
1.1. China Overview	1
1.2. Wuxi Overview	2
1.3. Jiangyin Overview	2
1.4. International Airport	3
1.5. Weather	4
1.6. Electricity	4
1.7. Telephone	4
2. INTRODUCTION TO IWUF 10TH SANDA WORLD CUP	4
3. DATES	4
3.1. Competition Date	4
3.2. Important Dates	4
4. VENUES	4
5. GENERAL PROGRAM	5
6. KEY CONTACTS	6

II. TECHNICAL INFORMATION

7. COMPRTITION EVENTS	7
7.1. Men's Weight Categories	7
7.2. Women's Weight Categories	7
8. QUALIFICATIONS	7
9. PARTICIPATION METHODS	7
10. COMPETITION RULES	8
11. COMPETITION METHODS	8
12. COSTUMES & EQUIPMENT	8
12.1. Competition	8
12.2. Ceremony	8
13. PLACING & AWARDS	9
14. AWARD CEREMONY	9
15. ENTRIES	9
15.1. Final Entry.....	9

15.2. Late Entry & Changes Policy	10
16. ARRIVAL & ACCREDITATION	10
16.1. Arrival	10
16.2. Accreditation	10
17. TECHNICAL MEETING	11
18. DRAWING-LOTS	11
19. WEIGHING-IN	11
20. TECHNICAL OFFICIALS	12
21. SUPERVISORY COMMISSION	12

III. TEAM INFORMATION

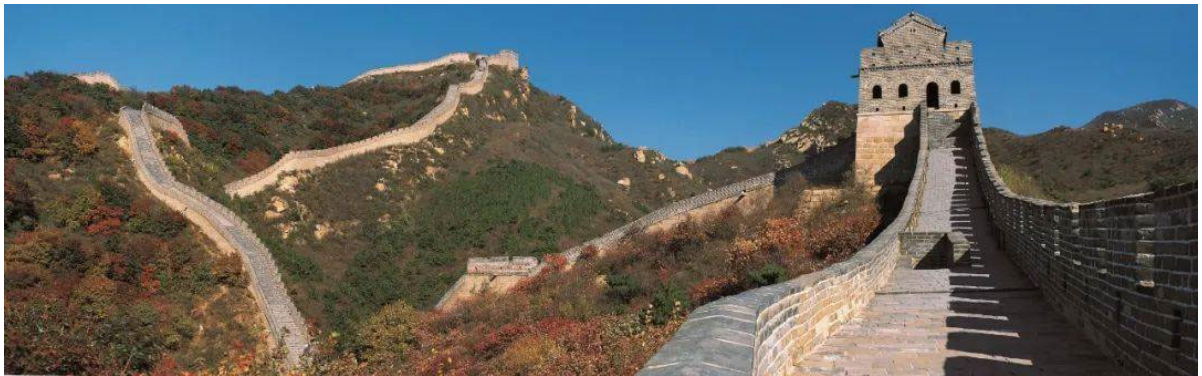
22. ACCOMMODATION	13
23. TRANSPORTATION	15
23.1. Transport Services for Arrivals & Departures	15
23.2. Local Transport Services	15
24. FINANCIAL CONDITIONS	15
24.1. Teams	15
24.2. Technical Officials	15
24.3. Additional Costs	15
24.4. Payment Methods	15
25. DOPING CONTROL	16
26. RESPONSIBILITY OF MEMBER FEDERATIONS	16
26.1. Fundamental Principles	16
26.2. Attitude of Athletes and Coaches	17
26.3. Image of Athletes	17
26.4. Insurance	17
27. PASSPORT & VISA REQUIREMENTS	17
28. ANNEX	17
Annex 1: Wavier of Liabilities	18
Annex 2: Medical Certificate (Sample)	20
Annex 3: List of Qualified Athletes	22

I. GENERAL INFORMATION

1. INTRODUCTION

1.1. China Overview

China, one of world' s most ancient civilizations, has a history dating back over 5,000 years. This has led to the country having an extraordinarily rich cultural heritage. As the world's largest developing country, China has seen remarkable progress in its economic and social development. Today' s China is politically and socially stable, and economically prosperous, with its people's lives getting better each day.



- **Geography**

China is located on the east side of Asia and the west edge of the Pacific Ocean. Covering a land area of about 9.6 million square kilometers, it features over 18,000 kilometers of continental coastline along its eastern and southern edges, and approximately 4.7 million square kilometers of inland and border seas. There are more than 7,600 islands of varying sizes in the sea area, among which the island of Taiwan, with an area of 35,798 square kilometers, is the largest.

- **Climate**

Given its sheer size, it is perhaps not surprising that China has a range of climates. Most of the country lies in northern temperate zone that features a mild, continental monsoon climate and four distinct seasons.

- **Population, Ethnicity and Language**

Population: 1,411.78 million.

Ethnicity: China is a multi-ethnic country with 56 ethnic groups in total.

Language: There are more than 80 local languages and about 30 Chinese writing systems. Mandarin

(also known as Putonghua) is the country's national language.

- **Religion**

Religion: China is a multi-religious country. The main religions are Buddhism, Taoism, Islam, Catholicism and Christianity. Chinese citizens enjoy freedom of religious belief.

- **Others**

China shares borders with 14 countries and is adjacent to eight countries by sea. The capital city is Beijing. China is comprised of provincial-level administrative divisions that can be further classified into: 4 municipalities directly under the central government, 23 provinces, 5 autonomous regions and 2 Special Administrative Regions.

Currency: The legal currency is renminbi (RMB), with yuan as the basic unit, and jiao and fen as fractions of this basic unit. One yuan is equal to 10 jiao and one jiao equal to 10 fen. Foreign currency can be freely exchanged in most hotels and banks on the Chinese mainland.

1.2. Wuxi Overview

Wuxi is a city in southern Jiangsu province, eastern China, 135 kilometers (84 mi) by car to the northwest of downtown Shanghai, between Changzhou and Suzhou, and one of the central cities in the Yangtze River Delta. The birthplace of Wu culture. As of the 2020 census, the city had a total population of 7,462,135 inhabitants.



Wuxi is a historically and culturally prominent city, and has been a thriving economic center since ancient times as a production and export hub of rice, silk and textiles. In the last few decades it has emerged as a major producer of electrical motors, software, solar technology and bicycle parts.

1.3. Jiangyin Overview

Jiangyin is one of the most important transport hubs on the Yangtze River, Jiangyin's name means "River Shade", from its location on the south or shady side of the Yangtze River. It is also one of the most developed counties in China.

With 1,595,138 inhabitants as of the 2010 census,



the city is now part of Jiangyin-Zhangjiagang-Jingjiang built-up or metropolitan area with 3,526,260 inhabitants.

1.4. International Airport

- Shanghai Pudong International Airport

Shanghai Pudong International Airport (IATA: PVG, ICAO: ZSPD) serves both international flights and a smaller number of domestic flights, while the city's other major airport, Shanghai-Hongqiao, mainly serves domestic and regional flights in East Asia. The distance between Shanghai Pudong International Airport and the Accreditation Center is 164 kilometers (about three hours by bus).

Shanghai Pudong International Airport is one of two international airports serving Shanghai, the municipality in East China, and a major aviation hub of East Asia. In 2022, Shanghai Pudong International Airport registered 14,178,400 passengers.



- Wuxi Shuofang Airport

Wuxi Shuofang Airport (IATA: WUX, ICAO: ZSWX) is an airport serving the cities of Wuxi and Suzhou in southern Jiangsu Province, China. The distance between Wuxi Shuofang Airport and the Accreditation Center is 56 kilometers (about one hour by bus).

Wuxi Shuofang Airport is located in Shuofang Subdistrict in Xinwu District, 12 kilometers southeast of Wuxi and 22 kilometers northwest of Suzhou. In 2022, Wuxi Shuofang Airport registered 3,768,868 passengers.



1.5. Weather

Historical average temperatures for Jiangyin in April range from 12°C-23°C.

1.6. Electricity

The electricity standard in China is 220V (50Hz).

1.7. Telephone

To call China from abroad, dial +86 (country code) followed by the city code, followed by the local number.

2. INTRODUCTION TO IWUF 10TH SANDA WORLD CUP

The IWUF Sanda World Cup (SWC) is an official event hosted by the International Wushu Federation (IWUF). This prestigious competition typically occurs biennially, showcasing the top sanda athletes from the most recent World Wushu Championships, but the 10th SWC held in Jiangyin, China also includes elites from the International Wushu Invitational Tournament 2024 (IWIT 2024). The Chinese Wushu Association (CWA) is responsible for the organization of the 10th SWC under the auspices of the IWUF.

For more information on this event, please visit the IWUF official website <http://www.iwuf.org/>, also visit the official social media, Facebook, Instagram (IG), YouTube.

3. DATES

3.1. Competition Date

April 5- 10, 2025.

3.2. Important Dates

- Online Final Entry

Open: February 5, 2025.

Deadline: 24:00 (Beijing Time) on March 5, 2025.

- Late Entry (Upon accepted by IWUF)

Duration: March 6, 2025 - 24:00 (Beijing Time) on March 20, 2025.

4. VENUES

The Culture and Sports Indoor Stadium is designed based on the architecture of the ancient Roman Colosseum in Italy, integrating the functions of modern sports architecture with classical architectural forms. This stadium is

used for hosting various competitions, performances, and large-scale events such as national fitness. It was put into use on January 30, 2024.

The Culture and Sports Indoor Stadium is located at No. 1 Minle Road, Xinqiao Town, Jiangyin City, Jiangsu Province, with a total construction area of 118,000 square meters and a main competition venue area of over 9,000 square meters. It can support four venues for competitions and can accommodate nearly 6,000 people to watch the events simultaneously.



4.1. **Competition Venue:** The Culture and Sports Indoor Stadium.

4.2. **Training Venue:** The Auxiliary Stadium of the Culture and Sports Indoor Stadium.

5. GENERAL PROGRAM

Date	Time	Activity	Location
April 5 (SAT)	All Day	Teams Arrival & Registration Judges' Arrival & Registration	TBD
April 6 (SUN)	06:30 – 08:00	Weigh-in	TBD
	10:00 – 12:00	Technical Meeting & Drawing-Lots	TBD
	All Day	Team Training Judges' Refresher Course & Rehearsal	TBD
April 7 (MON)	06:30 – 07:30	Weigh-in	TBD
	09:00 – 12:00	Competition	Culture and Sports Indoor Stadium
	19:00 – 22:00	Competition	
April 8 (TUE)	06:30 – 07:30	Weigh-in	TBD
	09:00 – 12:00	Competition	Culture and Sports Indoor Stadium
	19:00 – 22:00	Competition	
April 9 (WED)	06:30 – 07:30	Weigh-in	TBD
	09:00 – 12:00	Competition & Award Ceremony	Culture and Sports Indoor Stadium
	19:00 – 22:00	Competition & Award Ceremony	
April 10 (THUR)	All Day	Departure (Before 2:00 P.M.)	

★ Note: This program is subject to change.

6. KEY CONTACTS

- **IWUF Secretariat**

Tel: +86-10-87774492

Email: events@iwuf.org

- **Chinese Wushu Association (CWA)**

Tel: +86-10-64912153

Email: wushu@wushu.com.cn

- **Jiangyin Shengshi Sports Events Co. Ltd (Local Organizer)**

Tel: +86-18380436849

Email: biyuezhao@outlook.com

II. TECHNICAL INFORMATION

7. COMPETITION EVENTS

7.1. **Men's Weight Categories:** 48kg, 52kg, 56kg, 60kg, 65kg, 70kg, 75kg, 80kg, 85kg, 90kg, 90kg+;

7.2. **Women's Weight Categories:** 48kg, 52kg, 56kg, 60kg, 65kg, 70kg, 75kg.

8. QUALIFICATIONS

8.1. The following athletes competing the events under **Article 7** qualify for the 10th SWC. All qualified athletes are listed in Annex 3.

- The top 3 placed athletes (3rd place juxtaposed) from the 16th World Wushu Championships;
- Two (2) seats by top ranking order from the International Wushu Invitational Tournament 2024.

8.2. Each member federation can enter at most one (1) team, hereinafter referred to as "Team", and each Team can have no more than eight (8) athletes.

8.3. Those athletes that have qualified but do not compete in the 10th Sanda World Cup will be replaced by the athletes appointed by the IWUF.

8.4. Each qualified athlete must be submitted into the World Cup by the IWUF Members.

8.5. Accompanying Team Officials:

- Teams that have one to three (1-3) qualified athlete(s) may submit two (2) team officials at most.
- Teams that have four to five (4-5) qualified athletes may submit three (3) team officials at most.
- Teams that have six to seven (6-7) qualified athletes may submit four (4) team officials at most.
- Teams that have eight (8) qualified athletes may submit five (5) team officials at most.

9. PARTICIPATION METHODS

9.1. Each qualified athlete may only participate within the events he or she has qualified for.

9.2. The remaining vacated quotas will be filled by the athletes appointed by the IWUF.

9.3. Each athlete should bring along with them a valid Medical Certificate (including electrocardiogram (ECG) test, electroencephalogram (EEG) test, pulse and blood pressure, etc.) (Annex 2) issued within 30 days prior to the start of the competition signed by a qualified doctor and a Life Accidental Injury Insurance Certificate. All athletes are required to submit a completed and signed Waiver of Liabilities (Annex 1).

10. COMPETITION RULES

Unless otherwise stated within these regulations, the competition will be conducted in accordance with the "IWUF Wushu Sanda Competition Rules & Judging Methods 2024" (hereinafter referred to as the "Rules"). The Rules may be interpreted solely at the discretion of the IWUF. In case of any disagreement in the interpretation of the rules, the English version shall prevail.

11. COMPETITION METHODS

- 11.1. The competition will utilize the single-knockout system. However, if the number of athletes in a given weight category is three (3), a single round-robin competition system will be adopted.
- 11.2. Following arrival and accreditation, athletes will undergo an initial weigh-in and drawing-lots as stipulated in the schedule. Athletes that are competing on a specific day of competition are required to weigh-in at the specific time and place prior to the start of the day's event.

12. COSTUMES & EQUIPMENT

12.1. Competition

- Athletes shall wear costumes and protective gears in compliance with the Rules to participate in the competition.
- Each athlete must provide two (2) sets of competition uniforms: one (1) set in red and one (1) set in blue.
- Each athlete must provide their own gum guard, groin cups, and hand wraps.
- Gloves, headgear and chest protector manufactured by the IWUF's certified supplier(s) will be provided by the Organizing Committee.
- Men's athletes will not wear headgears and chest protectors.

12.2. Ceremony

- All Teams must follow the IWUF Brand Control Guidelines for Wushu Competition Uniforms.
- All Teams must wear their official national/territorial team uniforms at the Opening and Closing Ceremonies.
- Medalists are expected to attend the Award Ceremony in their national/territorial team uniforms.
- Athletes are expected to take off caps/hats/sunglasses during the ceremony.

13. PLACING & AWARDS

- **1st place** Gold Medal & Certificate, RMB 10,000 yuan prize money.
- **2nd place** Silver Medal & Certificate, RMB 6,000 yuan prize money.
- **3rd place** (juxtaposition) Bronze Medal & Certificate, RMB 3,000 yuan prize money.

14. AWARD CEREMONY

- 14.1. **Ten (10) minutes** before the Award Ceremony starts, the medalists will be escorted by staff to the Waiting Area to get ready for the ceremony.
- 14.2. The medalists are required to attend the Award Ceremony to receive their medals.
- 14.3. Athletes are required to face the flags while they are being raised.
- 14.4. Athletes and officials are not allowed to take any other national, cultural or religious symbols to or onto the podium.
- 14.5. In case a medalist is unable to attend the ceremony for a valid reason, his/her medal and certificate may be presented to an official of the relevant delegation. Absence without a valid reason will forfeit the right to receive a medal.
- 14.6. If there are fewer than three (3) medalists in a single event, no Award Ceremony will be held for that event. The team leader will go to the designated place to receive the medals and certificates.

15. ENTRIES

15.1. Final Entry

All final entries must be submitted through the IWUF Online Registration System. All sections of the online entry must be completed in full, including the uploading of those required documents.

- **IWUF Online Registration System**

URL: <http://registration.iwuf.org>

Tel: +86-13812587382

Email: 783006375@qq.com

Tech-support: Jiangyin Shengshi Sports Events Co. Ltd

The deadline for the final entry to be completed through the online system is 24:00 (Beijing Time) on **March 5, 2025**. Each team is required to print a copy of the submitted entry and present it upon arrival and registration in Jiangyin.

15.2. Late Entry & Changes Policy

Teams with requests for late entry or changes must submit a written document for approval and shall pay corresponding fees before the late entry deadline, otherwise request will be denied.

The deadline for late entry and changes is due on **March 20, 2025**, 24:00 (Beijing Time).

Late entries or information change (athlete replacement, changes due to incorrect or missing registration information) are subject to the approval of the IWUF and, if accepted, are subject to a late-entry fee of US\$ 100 per athlete per event.

The above fees must be paid via wire transfer to the IWUF Secretariat before **March 20, 2025**, 24:00 (Beijing Time).

Beneficiary Name/Bank account name	International Wushu Federation
Beneficiary Address	Avenue de Rhodanie 58, 1007 Lausanne, Switzerland
Bank Name	UBS AG
Bank address	Place St-François 16, Case postale, CH-1002 Lausanne, Switzerland
Bank account number	0243-166188.61X
Bank clearing	0243
SWIFT code	UBSWCHZH80A
IBAN	CH680024324316618861X
Company taxpayer identification number	CH TVA No. CHE-436.351.545
Country	Switzerland

16. ARRIVAL & ACCREDITATION

16.1. Arrival

All teams and judges are required to register with the 10th SWC Organizing Committee at the designated Accreditation Center no later than 24:00 (Beijing Time) on **April 5, 2025**.

16.2. Accreditation

Accreditation Center(s) will open at **9:00 A.M.** (Beijing Time) on **April 5, 2025**.

Upon arrival at the Accreditation Center, the team leader is required to complete the following process with the LOC.

REGULATIONS - IWUF 10TH SANDA WORLD CUP

1	Present each team members' passport
2	Submit Final Entry Form with signature and stamp and confirm the registration information
3	Submit three (3) national flags (size: 1m×2m)
4	Submit national anthem (short version) in MP3 format on a CD or USB flash drive
5	Submit valid Medical Certificate (Sample) of all athletes (Annex 2)
6	Submit valid Life Accidental Injury Insurance Certificates of all athletes
7	Submit signed 10 th SWC "Waiver of Liabilities" of all participants (Annex 1)
8	Pay the relevant participation fees in full (if applicable)
9	Pay the relevant penalty fees in full (if applicable)
10	Submit a bank receipt of payment (either in paper or electronic documents)
11	Sign and confirm all the above items are completed

Accreditation cards will be given to the team leader upon completion of the accreditation process. All personnel must participate in the official activities with their accreditation card during the 10th SWC.

17. TECHNICAL MEETING

17.1. The Technical Meeting for team managers and coaches will take place at **10:00 A.M.** on **April 6, 2025**. Each team should send two (2) representatives to attend the meeting.

17.2. The Technical Meeting content will be presented as follows:

- IWUF Event Guidelines (IWUF representatives)
- Event Logistics Information (LOC representatives)
- Event Technical Details (Chair of Jury of Appeals and Chief Referee)
- Other Matters

17.3. The place of the Technical Meeting will be announced in due course.

18. DRAWING-LOTS

18.1. The drawing-lots of the 10th SWC will take place after the Technical Meeting. Each Team may send two (2) representatives to attend the session.

18.2. The Jury of Appeals will draw on behalf of the Teams that are unable to send a representative to attend.

19. WEIGHING-IN

19.1. The first official weigh-in for all athletes will take place at **6:30 A.M.** (Beijing Time) on **April 6, 2025**.

Furthermore, the weigh-in will be conducted on daily basis at **6:30 A.M.** (Beijing Time), athletes must attend a weigh-in on each day they participate in competition (specific places for each weigh-in will be announced accordingly).

- 19.2. Accreditation cards and passports must be presented at each weigh-in session. An athlete's failure to attend any required weigh-in will result in his/her disqualification from the competition.

20. TECHNICAL OFFICIALS

- 20.1. All judges of the 10th SWC must hold their own valid judge license issued by the IWUF.
- 20.2. All Judges of the 10th SWC will be selected and appointed by the IWUF for officiating the competition.

21. SUPERVISORY COMMISSION

- 21.1. The 10th SWC Supervisory Commission shall be established by the IWUF, with the purpose of and the right to resolve any disputes or investigate any issues that arise during the course of this competition to ensure the smooth execution of the event.
- 21.2. The Supervisory Commission for an IWUF competition consists of three to five (3-5) members appointed by the president of the IWUF and is responsible for overseeing the competition management and dispute mediation for the entire duration of this competition and not beyond. Specific descriptions of responsibilities include:
- The Commission will ensure that competitions adhere to principles of fair play, impartiality, and transparency.
 - The Commission represents the IWUF in handling disputes regarding the competitions that arise between the National/Territorial Federations (NFs) and/or the Teams and/or the LOC, and has the right to resolve such disputes. However, the Commission does not directly interfere with the competition proceedings or disputes arise within the competition, which are responsibility of the Jury of Appeals and the relevant judging panel.
 - The Commission represents the IWUF in coordinating between the NFs and/or the Teams and/or the LOC.
 - The Commission shall report any irregularities or violations observed during the competitions to the IWUF president and the IWUF Executive Board.
 - The Commission shall monitor and demand that NFs take responsibility for their athletes' general attitude and comportment

III. TEAM INFORMATION

22. ACCOMMODATION

- 22.1. All participants are required to lodge at the designated hotels as arranged by the LOC.
- 22.2. The LOC will arrange accommodation and meals for all participants from April 5, 2025, until midday on April 10, 2025. Participants who would like to arrive earlier or depart later than the required dates should provide the dates for the intended duration of stay during the final registration process, and must ensure to book accommodations accordingly, with daily rates applying for extended stays and taking the hotel check-in time of 15:00 into consideration.
- 22.3. Hotels Information:

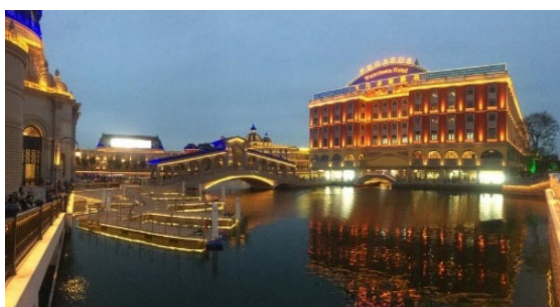
- **Team hotel: Pegasus Watertown Hotel (3 stars)**

Address: No.888, Nanhuan Road, Jiangyin City, Jiangsu Province, China

Telephone: +86-510-81699000

Distance to Culture and Sports Indoor Stadium is 5 minutes by walking.

Jiangyin Pegasus Watertown Hotel is located in the scenic area of Heilan Pegasus Watertown in Jiangyin City, with elegant environment and complete facilities. It is a theme resort based on horse elements and integrates dining, guest rooms, entertainment and leisure shopping. The hotel has 249 rooms, next to Marrisle hotel and Taoyuan Resort, the mid-range and high-end are available.



Participation Fee Per Person Per Night	Single Room Only one person allowed	Double Room Two persons allowed
In-quota athletes & team officials from IWIT 2024	130USD	110USD
Extra-quota team officials & observers from 16 th WWC & IWIT 2024	150USD	130USD

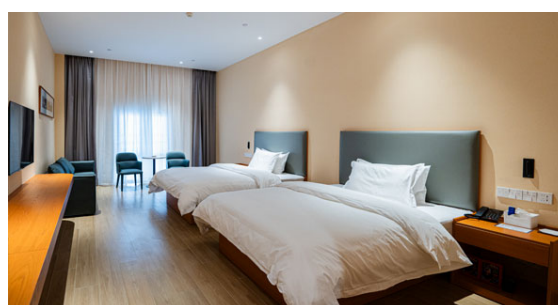
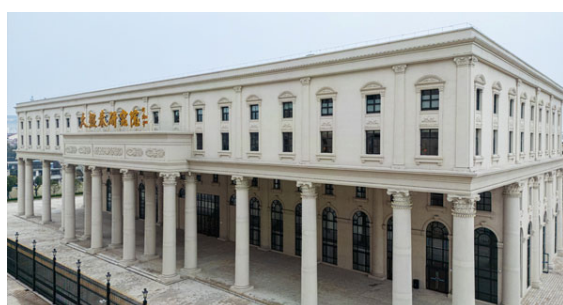
- **Judge hotel: Taiji Research Institute**

Address: No.888, Nanhuan Road, Jiangyin City, Jiangsu Province, China

Telephone: +86-510-81699000

Distance to Culture and Sports Indoor Stadium is 2 minutes by walking.

The Taiji Research Institute covers a total area of 1,000 square meters and consists of four floors. The first to third floors have multiple rooms, currently 30 rooms available. The first floor also features an anti-doping restaurant to provide more comprehensive support for professional athletes, the second floor is designated as an office area, while the fourth floor offers a 3,000-square-meter multi-functional space to meet the needs of daily training, small-scale competitions, and training courses.



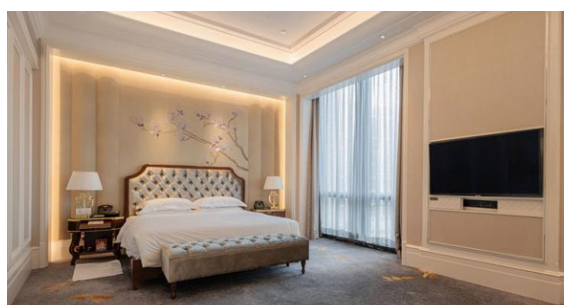
- **Headquarter hotel: Marrisle Hotel (5 star)**

Address: No.888, Nanhuan Road, Jiangyin City, Jiangsu Province, China

Telephone: +86-510-81699000

Distance to Culture and Sports Indoor Stadium is 5 minutes by walking.

Jiangyin Marrisle Hotel is located in the tourism scenic area of Pegasus Watertown in Jiangyin city. The hotel has an elegant environment and complete facilities. It is an artistic cultural theme resort hotel with a main theme of horse elements, including catering, rooms, entertainment, and leisure. There are more than 200 delicate rooms, 16 special catering halls, and 4 banquet halls. The hotel also has lobby bar, swimming pool, SPA room, fitness room, beauty salon, and executive lounge. The Hotel interprets the traditional classic in modern architectural form, with the



round banquet hall and curved hotel building complementing each other, like two pearls reflecting in the surrounding lake and canal, creating a magnificent scenery.

23. TRANSPORTATION

23.1. Transport Services for Arrivals & Departures

The LOC will provide all participants with the transport services between the designated airports and the official hotels.

23.2. Local Transport Services

Local transport services between the official hotels and the venues (if required) will be provided by shuttle buses. A detailed transport schedule will be provided upon arrival.

24. FINANCIAL CONDITIONS

24.1. **Teams:** The international airfare and related travel expenses of all team participants shall be borne by the Teams themselves. The LOC will provide accommodation and meals for in-quota athletes and team officials who qualified from the 16th WWC.

Athletes and accompanying officials of the International Wushu Invitational Tournament 2024 who have been selected for the 10th SWC will be responsible for their own expenses.

All extra-quota athletes and officials will be responsible for their own accommodation and meals expenses.

All qualified athletes are listed in Annex 3.

24.2. **Technical Officials:** The international airfare, accommodation, meals and related travel expenses will be borne by the LOC.

24.3. **Additional Costs:** Participants arriving early or departing late may be subject to additional costs related thereto which shall be borne by the participants themselves.

24.4. Payment Methods:

- Participating teams are required to pay the relevant participation fees by international wire transfer with their final entry submission.
- Following the submission of a final entry, the LOC will contact each Team and provide them with their invoice, which will state totals and bank/payment details. Teams are then required to transfer the full amount as stated on the invoice. All international wire transfer and bank fees are to be paid by the

Teams transferring the funds themselves.

- Proof of full payment should be sent to the LOC by email and brought along to Jiangyin by the team leader. The LOC requires that all participation fees are to be paid in advance in order to secure accommodation as required by the official hotels. The LOC will be unable to guarantee a Team's required accommodation without pre-payment in full. Teams are requested to be mindful of this when submitting their final entry.
- **Bank Information of Organizing Committee:**

Bank Name	Bank of China Jiangyin Branch
Account Name	Jiangyin Shengshi Sports Events Co. Ltd
Account Number (IBAN):	496280307191
SWIFT Code	BKCHCNBJ95C
Beneficiary Bank Holder Address	Lijiatang A-001 Weili village, Xinqiao Town, Jiangyin City, Wuxi City, Jiangsu , P.R. China, 214426
Bank Address	No.1 Middle Renmin Road, Jiangyin City, Jiangsu, P.R. China
Note: Any service charges incurred for international wire transfers shall be borne by participants themselves.	

25. DOPING CONTROL

Doping control will be conducted during the 10th SWC according to the requirements of the International Olympic Committee (IOC) and the World Anti-Doping Agency (WADA), and will follow the procedure prescribed in the IWUF Anti-Doping Rules. The number of tests will be decided by the International Testing Agency (ITA). If an athlete is found have positively doped through the doping process, he/she will be dealt with in accordance with the IWUF Anti-Doping Rules.

26. RESPONSIBILITY OF MEMBER FEDERATIONS

NFs are responsible for their officials, coaches, athletes, and observers adhering to the IWUF and to all relevant rules established by the IWUF and the Organizing Committee. NFs should ensure that their participants hold themselves to the highest standards in all their actions during the event.

26.1. Fundamental Principles

All NFs' Team members participating in the 10th SWC must observe and respect the IWUF constitution, rules, regulations, and representatives. Individuals deemed to have acted against the IWUF, its principles, interests or purpose may be subject to suspension or expulsion from the event and/or cancellation of

their accreditation.

26.2. Attitude of Athletes and Coaches

The athletes will compete under the responsibility of their NFs. NFs are fully responsible regarding the general attitude and comportment of their athletes. Coaches should respect the judging panel and all complaints must be conducted in accordance with competition procedures. Athletes and Coaches should comply with the IWUF Code of Ethics. Any act against the IWUF judging panel may be subject to suspension or expulsion from the event and/or cancellation of their accreditation and/or competition results.

26.3. Image of Athletes

Each NF is responsible for obtaining the rights for the IWUF to use its athletes' images at the discretion of the IWUF for promotional purposes in all forms.

26.4. Insurance

Each NF is fully and sole responsible for insuring its athletes against injury and third-party risk (public liability) during the period of the 10th SWC. The IWUF and the Organizing Committee are not responsible in part or in whole of the said liability.

27. PASSPORT & VISA REQUIREMENTS

- 27.1. All participants must hold a valid passport and should allow plenty of time for visa application and processing.
- 27.2. To ensure as few complications during visa application and travel as possible, it is suggested that all participants' passports are valid for at least six (6) months following their final day of travel.
- 27.3. Teams that require visa invitation letters should state their requests in the Final Entry by 24:00 (Beijing Time) **March 5, 2025**.
- 27.4. If you need any assistance on visa issues, please contact the LOC's email.

NOTE: It is strongly recommended for Teams that need to apply for visas do so immediately.

28. ANNEX

Annex 1: Wavier of Liabilities

Annex 2: Medical Certificate (Sample)

Annex 3: List of Qualified Athletes

Annex 1

**International Wushu Federation (IWUF)
Waiver of Liabilities**

Federation				Color ID Photo
Name of Participant				
Date of Birth		Gender		
Nationality		Passport No.		
Role of Participant				
*Athlete *Team Manager *Coach *Doctor *Observer				

I, the undersigned, knowingly and without duress, do voluntarily submit my Entry to the 10th Sanda World Cup (SWC). The 10th Sanda World Cup is hosted by International Wushu Federation (IWUF) and organized by Chinese Wushu Association and City of Jiangyin, hereafter Chinese Wushu Association and City of Jiangyin are referred as "Organizing Committee". I understand and acknowledge that the participation in the 10th Sanda World Cup involves inherent risk of losses, damages or injuries, including but not limited to risks deriving from participating in the competition and trainings, in the use of the sporting facilities or equipment and/or risks arising from actions or omissions of other participants or other third parties. I further understand that my participation in the 10th Sanda World Cup is subject to my agreement and acceptance of this Waiver of Liabilities ("Waiver"). In consideration of the IWUF and Organizing Committee accepting my application, I hereby assume all risk of physical and mental injuries, disabilities and losses which may result from or in connection with my participation in the 10th Sanda World Cup. Acting for myself, heirs, personal officers, agents, representatives and assignees, I do hereby release, to the extent permissible, the IWUF and Organizing Committee including all associates, auxiliaries and affiliates, such as but not limited to their officers, agents, employees, representatives, volunteers, judges and referees and other related members from all claims, actions, suits, and controversies related to any loss, damage or injury by reason of any matter, cause or thing whatsoever that I may sustain as a result of or in connection with my participation in the 10th Sanda World Cup. I fully understand and acknowledge that it is my sole responsibility to determine whether I am fit and healthy enough to participate in any events without posing a risk to myself or others. I hereby certify that, to the best of my knowledge, this is the case. I understand to have a duty to inspect the state of the used sporting facilities and equipment, and I waive any claim arising out of any respective defect. I fully understand that all medical attention or treatment afforded to me by the IWUF and Organizing Committee including all associates, auxiliaries and affiliates, e.g. their officers, medical personnel, representatives, employees, volunteers, and all other related members, will be of the first aid type only, and I hereby consent to receiving such treatment and release the IWUF and Organizing Committee as well as their officers, representatives, volunteers, employees and all other related members from any liability for such aid. I understand it is my personal obligation to obtain my own medical coverage. I am fully and solely responsible for adequately insuring myself against injury and third-party risk (public liability), with such insurance to cover the period before, during and after the event. The IWUF and the Organizing Committee including all associates are not responsible in part or in whole for any damages or medical or hospital expenses incurred as a result of participation in the 10th Sanda World Cup.

REGULATIONS - IWUF 10TH SANDA WORLD CUP

I agree to abide by and follow the Rules established by the IWUF and Organizing Committee and follow all received instructions. I acknowledge and agree that it is my personal responsibility to be informed about all aforementioned Rules and instructions. I agree that I will conduct myself in a professional and courteous manner at all times and to be subject to penalties and sanctions for violations related thereto, pursuant to the IWUF Constitution and IWUF Ethics Code as updated from time to time and other Rules established by the IWUF and Organizing Committee. I understand that any dispute must be resolved in accordance with the IWUF Constitution and any further applicable IWUF Rules. I agree that my performance, attendance, and participation at the 10th Sanda World Cup may be photographed, filmed or otherwise recorded or released or telecast live. I consent to allow the IWUF and Organizing Committee use of my name, likeness, address, voices, poses, pictures, videos, live or non-live coverage and biographical and biological data concerning full or parts, in any form or language ("Identity, Voice and Image Data"), with or without other material, throughout the world, without limitation, for television, radio, video, theatrical medium picture, or any other medium and any other purpose by IWUF or the Organizing Committee through any devices now known or hereafter devised and I do hereby waive any compensation in regard thereof as well as any future rights to the aforementioned. I also consent to the collecting, processing and use of all above-mentioned Identity, Voice and Image Data by the IWUF and Organizing Committee for commercial and promotional services of sponsors and media partners as well as, where necessary, by third parties for the purpose of facilitating my participation an accreditation in the event (e.g. law enforcement authorities, border services agencies etc.).

Furthermore, while I note that the IWUF and Organizing Committee will take into consideration my needs to rest, train and prepare for the events, I agree to be reasonably available during the Events for TV/digital/radio interviews, promotional or press photo sessions and press conferences at the dedicated areas.

If any provision of this Waiver is deemed to be invalid or unenforceable, the remaining provisions shall remain in full force and effect. This Waiver shall be governed by the IWUF Constitution, the further applicable Rules established by the IWUF and Organizing Committee and, subsidiarily, by Swiss law.

I have read and fully understand the waiver listed above.

****For athletes under the age of 18 -This waiver must be signed by their parent or legal guardian****

Signature of Participant	Signature of Parent/Legal Guardian	Name of Parent/Legal Guardian
	(If participant is under 18 years of age)	
Date	Date	Date

Annex 2

International Wushu Federation (IWUF) Medical Certificate (Sample)

1. ATHLETE INFORMATION

Surname				Color ID Photo
Given Name(s)				
Country		Postal Code		
Passport No		Tel. No		
Email				
Address				
Weight Category: kg				

2. QUESTIONS FOR ATHELETE (Attach relevant documents if you answered 'yes' to any of the following)

Is a doctor currently treating you?	
Have you ever been unconscious or had a concussion?	
Have you been hit hard in the head in the last 6 months?	
Have you had any headache in the last 2 weeks?	
Do you have any problems with bleeding?	
Do any diseases run in your family?	
Have you had any surgery?	
Have you ever had to stay in a hospital?	
Do you have any medical condition?	
Do you have a history of seasonal or drug allergies?	
Is there a history of sudden death under 45 years old in the family?	

3. MEDICAL DOCTOR INFORMATION

Surname:	Given Name(s):
Tel. No.	Address:

4. MEDICAL EXAMINATION

Item				Abnormalities
Head	Cranial nerves, eyes, pupil size and reactivity. Fundi. Vision by chart.	Normal	Abnormal	
	Mouth, teeth, throat	Normal	Abnormal	
	Ears	Normal	Abnormal	
	Temporomandibular joint	Normal	Abnormal	
	Brain Examination: electroencephalogram (EEG) Test (Sanda athletes only)	Normal	Abnormal	
Neck	Cervical spine, lymph nodes	Normal	Abnormal	
Chest	Breath sounds, rib, tenderness on compression	Normal	Abnormal	
Neurological System	Reflexes	Normal	Abnormal	
	Verbal responses	Normal	Abnormal	
	Motor responses and balance	Normal	Abnormal	
Cardiovascular System	Heart rate	Normal	Abnormal	
	Blood pressure	Normal	Abnormal	
	Heart examination: electrocardiogram (ECG) Test	Normal	Abnormal	
Medications Used	Name and dosage	Yes	No	

5. DOCTOR CONFIRMATION

I confirm that the Athlete is <input type="checkbox"/> fit / <input type="checkbox"/> not fit to participate in the competition.	Signature: Place/Date:
--	-------------------------------

6. NATIONAL FEDERATION CONFIRMATION

I confirm that the above information provided is true and correct.

National Federation			
Name of Representative			
Title of Representative			
Signature:			Date:

Annex 3

IWUF 10th Sanda World Cup List of Qualified Athletes

1. Men's 48KG

No.	Name	Code	Qualification Way	Participation Fee Paid By
1	Xingwen YANG	CHN	16th WWC	LOC
2	Hai TRAN HUY	VIE	16th WWC	LOC
3	Russel DIAZ	PHI	16th WWC	LOC
4	Kushal KUMAR	IND	16th WWC	LOC
5	Tharwt Mahyoub Ali Naji AL-SENDI	YEM	IWIT 2024	NF
6	Md Nayon SHEIKH	BAN	IWIT 2024	NF

2. Men's 52KG

No.	Name	Code	Qualification Way	Participation Fee Paid By
1	Sishuo TANG	CHN	16th WWC	LOC
2	Arnel Roa MANDAL	PHI	16th WWC	LOC
3	Laksmna Pandu PRATAMA	INA	16th WWC	LOC
4	Tam DINH VAN	VIE	16th WWC	LOC
5	Anuj ANUJ	IND	IWIT 2024	NF
6	Mehmet DEMIRCI	TUR	IWIT 2024	NF

3. Men's 56KG

No.	Name	Code	Qualification Way	Participation Fee Paid By
1	Minjun HONG	KOR	16th WWC	LOC
2	Bintang REINDRA NADA GUITARA	INA	16th WWC	LOC
3	Islam KARIMOV	KAZ	16th WWC	LOC
4	Hio Lam KU	MAC	16th WWC	LOC
5	Saydullo ABDURASHITOV	UZB	IWIT 2024	NF
6	Carlos Jr. BAYLON	PHI	IWIT 2024	NF

4. Men's 60KG

No.	Name	Code	Qualification Way	Participation Fee Paid By
1	Yu Hong LEUNG	HKG	16th WWC	LOC
2	Manh Cuong NGUYEN	VIE	16th WWC	LOC
3	Elchin EMINOV	AZE	16th WWC	LOC
4	Avazbek AMANBEKOV	KGZ	16th WWC	LOC
5	Xander ALIPIO	PHI	IWIT 2024	NF
6	Md Milon ALI	BAN	IWIT 2024	NF

5. Men's 65KG

No.	Name	Code	Qualification Way	Participation Fee Paid By
1	Wei GUO	CHN	16th WWC	LOC
2	Clemente TABUGARA JR.	PHI	16th WWC	LOC
3	Samuel MARBUN	INA	16th WWC	LOC
4	Bexultan KOSKENOV	KAZ	16th WWC	LOC
5	Ravi PANCHAL	IND	IWIT 2024	NF
6	Bekezobek YOGDIJONOV	UZB	IWIT 2024	NF

6. Men's 70KG

No.	Name	Code	Qualification Way	Participation Fee Paid By
1	Dat HUYNH DO	VIE	16th WWC	LOC
2	Huan Yi ZHANG	TPE	16th WWC	LOC
3	Manuel DI CARLO	ITA	16th WWC	LOC
4	Yat Lam CHEUNG	HKG	16th WWC	LOC
5	Mohsen MOHAMMADSEIFI	IRI	IWIT 2024	NF
6	Gicheol SONG	KOR	IWIT 2024	NF

7. Men's 75KG

No.	Name	Code	Qualification Way	Participation Fee Paid By
1	Michele BALDUCCI	ITA	16th WWC	LOC
2	Yoan BENBEDRA	FRA	16th WWC	LOC
3	Fei Long CAI	MAC	16th WWC	LOC
4	Sanghun JO	KOR	16th WWC	LOC
5	Soheil MOUSAVI	IRI	IWIT 2024	NF
6	Mukesh CHOUDHARY	IND	IWIT 2024	NF

8. Men's 80KG

No.	Name	Code	Qualification Way	Participation Fee Paid By
1	Wenlong LIU	CHN	16th WWC	LOC
2	Kevin Alan GALLARDO ONOFRE	MEX	16th WWC	LOC
3	Gochmyrat JUMANYYAZOV	TKM	16th WWC	LOC
4	Fabio GJONI	ITA	16th WWC	LOC
5	Ali KHORSHIDIRABIE	IRI	IWIT 2024	NF
6	Sanjeev MAHARJAN	NEP	IWIT 2024	NF

9. Men's 85KG

No.	Name	Code	Qualification Way	Participation Fee Paid By
1	Michael Nicholas WOODWARD	AUS	16th WWC	LOC
2	Chih-wei WANG	USA	16th WWC	LOC
3	Juan David ARMERO GUTIERREZ	COL	16th WWC	LOC
4	Georges EID	LBN	16th WWC	LOC
5	Mohammadreza RIGI	IRI	IWIT 2024	NF
6	Sukanta ROY	BAN	IWIT 2024	NF

REGULATIONS - IWUF 10TH SANDA WORLD CUP**10. Men's 90KG**

No.	Name	Code	Qualification Way	Participation Fee Paid By
1	Georges SAADE	LBN	16th WWC	LOC
2	Giuseppe Vincenzo PICCOLO	CAN	16th WWC	LOC
3	Julian Martin SILVA	ARG	16th WWC	LOC
4	Livingston MCKENZIE JR	USA	16th WWC	LOC
5	Seyedmoein TAGHAVI	IRI	IWIT 2024	NF
6	Enes GEZER	TUR	IWIT 2024	NF

11. Men's 90KG+

No.	Name	Code	Qualification Way	Participation Fee Paid By
1	Xiang YE	CHN	16th WWC	LOC
2	Nursultan TURSINKULOV	KAZ	16th WWC	LOC
3	Michel ZAMMAR	LBN	16th WWC	LOC
4	Ahmed SAMIR ABDELMOAZ	EGY	16th WWC	LOC
5	Jiahao CAI	HKG	IWIT 2024	NF

12. Women's 48KG

No.	Name	Code	Qualification Way	Participation Fee Paid By
1	Lan NGUYEN THI	VIE	16th WWC	LOC
2	Jenifer KILAPIO	PHI	16th WWC	LOC
3	Rosa BEATRICE MALAU	INA	16th WWC	LOC
4	Chhavi CHHAVI	IND	16th WWC	LOC

13. Women's 52KG

No.	Name	Code	Qualification Way	Participation Fee Paid By
1	Mengyue CHEN	CHN	16th WWC	LOC
2	Elisa CALANDUCCI	ITA	16th WWC	LOC
3	Audrey MEEKS	USA	16th WWC	LOC
4	Nga NGO THI PHUONG	VIE	16th WWC	LOC
5	Edinea PRADO CAMARGO	BRA	IWIT 2024	NF
6	Eiva Yesmin DISHA	BAN	IWIT 2024	NF

14. Women's 56KG

No.	Name	Code	Qualification Way	Participation Fee Paid By
1	Danfeng LIU	CHN	16th WWC	LOC
2	Beatriz ADRIAO RUSTICE SILVA	BRA	16th WWC	LOC
3	Ana-maria PAL	ROU	16th WWC	LOC
4	Berna TUT	TUR	IWIT 2024	NF
5	Bidhya GURUNG	NEP	IWIT 2024	NF

15. Women's 60KG

No.	Name	Code	Qualification Way	Participation Fee Paid By
1	Thi Thu Thuy NGUYEN	VIE	16th WWC	LOC
2	Roshibina Devi NAOREM	IND	16th WWC	LOC
3	Salome Yael SCHUMACHER	SUI	16th WWC	LOC
4	Sabrina Maria DETOMA	ARG	16th WWC	LOC
5	Soheila MANSOURIAN SEMIROMI	IRI	IWIT 2024	NF
6	Gamze Sila GULDAL	TUR	IWIT 2024	NF

16. Women's 65KG

No.	Name	Code	Qualification Way	Participation Fee Paid By
1	Andreea Alexandra CEBUC	ROU	16th WWC	LOC
2	Krista Stepheny DYER	BER	16th WWC	LOC
3	Nicole LOWE-TARBERT	AUS	16th WWC	LOC
4	Sedigheh DARIAEIVARKADEH	IRI	IWIT 2024	NF
5	Asuman CIGLIOGLU	TUR	IWIT 2024	NF

17. Women's 70KG

No.	Name	Code	Qualification Way	Participation Fee Paid By
1	Hailan ZHU	CHN	16th WWC	LOC
2	Maya BEJAOUI	TUN	16th WWC	LOC
3	Govher GOVSHUDOVA	TKM	16th WWC	LOC

18. Women's 70KG

No.	Name	Code	Qualification Way	Participation Fee Paid By
1	Rimel KHALIFI	TUN	16th WWC	LOC
2	Lydia SALAMEH	LBN	16th WWC	LOC
3	Roba HOSSAM MOSTAFA ABDELAZIZ ELSHAFEI	EGY	16th WWC	LOC
4	Akniyet MARAT	KAZ	16th WWC	LOC
5	Shahrbano MANSOURIYAN SEMIROMI	IRI	IWIT 2024	NF
6	Kachi Rani MONDAL	BAN	IWIT 2024	NF

★ Note: This list is subject to change.